

# SIM

State Innovation Model

*HEALTH TRANSFORMATION IN COLORADO: HOW SIM CAN LEVERAGE  
AND SUPPORT COLORADO'S HEALTHY SPIRIT*

# WHAT IS COLORADO SIM?



- SIM: State Innovation Model
- SIM is an initiative of the Center for Medicare & Medicaid Innovation (CMMI).
- Colorado was awarded a \$2 million planning grant and \$65 million implementation grant to strengthen Colorado's Triple AIM strategy.
- Encourages states to develop and test models for transforming health care payment and delivery systems.
- Colorado received the 4<sup>th</sup> largest award based on the State's population.

# COLORADO'S SIM VISION

- To create a coordinated, accountable system of care that will provide Coloradans access to integrated primary care and behavioral health in the setting of the patient's medical home.

# COLORADO'S SIM GOAL

- Improve the health of Coloradans by providing access to integrated physical & behavioral health care services in coordinated systems, with value-based payment structures, for 80% of Colorado residents by 2019.

# COLORADO SIM : WHY IT MATTERS

84%

Of the time, the 14 most common physical complaints have no identifiable organic cause

80%

Of people with a behavioral health disorder will visit primary care at least once a year

> 50%

Of referrals from primary care to an outpatient behavioral health clinic do not make the 1<sup>st</sup> appointment

50%

Of behavioral health disorders are treated in primary care

67%

Of people with a behavioral health disorder do not get behavioral health treatment

# HEALTH TRANSFORMATION IN COLORADO

Payment Reform

Practice Transformation

Population Health

Consumer Engagement

HIT

Workforce

Policy

Evaluation

# PAYMENT REFORM

## OBSERVATION PHASE

- *Identify current & future spending benchmarks*
- *Understand needs to transform practice, delivery & payment*
- *Identify outcome & quality baselines*

## SHARED RISK & SAVINGS

- *Increased provider responsibility*
- *Extra payment built into cost of care*
- *Support in practice transformation*
- *Performance, cost & quality measurement*

## CARE COORDINATION & SAVINGS

- *Increased coordination thru additional payments*
- *Support in practice transformation*
- *Performance, quality & cost measurement*

## PAYMENTS & BUDGETING FOR COMPREHENSIVE PRIMARY CARE

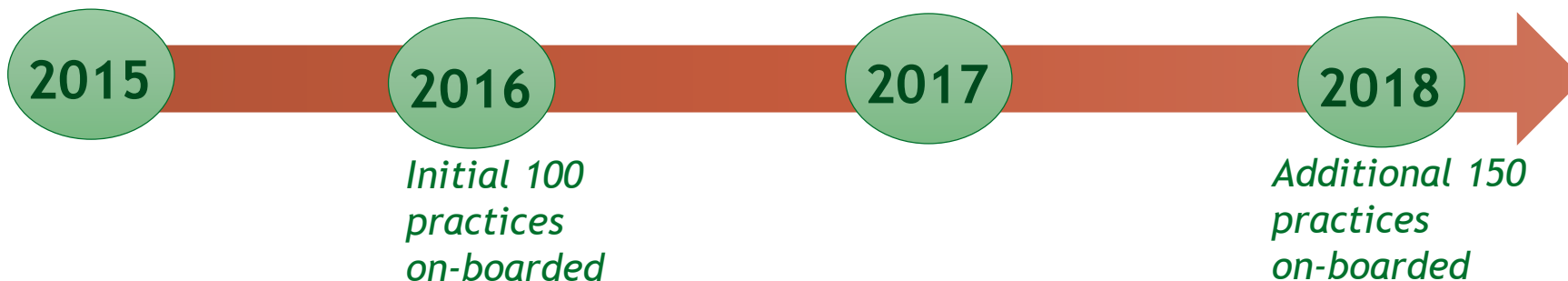
- *Learning collaborative*
- *Payment based on total cost of care & coordination*
- *Performance, quality & cost measurement*

# PRACTICE TRANSFORMATION

- Integration of physical and behavioral health care in 400 practices over the four year grant period.
- Implementation, assessment and technical requirements for practices to move toward integrated care and new payment model implementation.
- Develop inventory of all practices and behavioral health providers in Colorado and what services are being provided.

*Ramp-up, including  
practice assessment tool  
& IT infrastructure*

*Additional 150  
practices  
on-boarded*



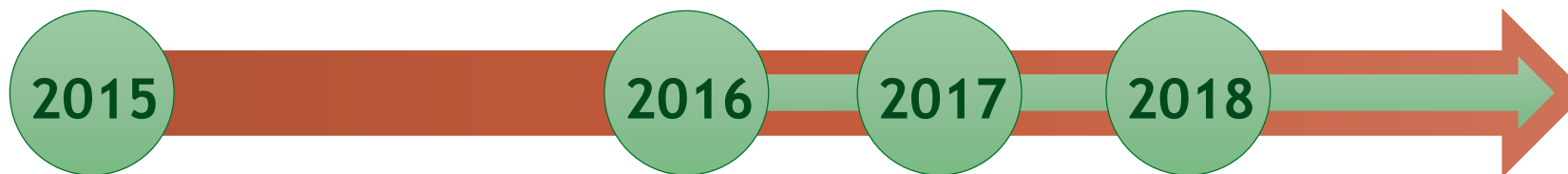


# POPULATION HEALTH

- Improve physical and behavioral health integration for Colorado communities
- Award 4-5 grants to communities using collaboration and evidence based best practices to improve awareness of integrated behavioral and physical health care in Colorado.
- Provide T.A. to grantees to monitor and evaluate programs.

*Regional planning;  
review community  
assessments*

*Launch collaboratives; align funding  
with regional needs; bi-annual  
convening of collaboratives*



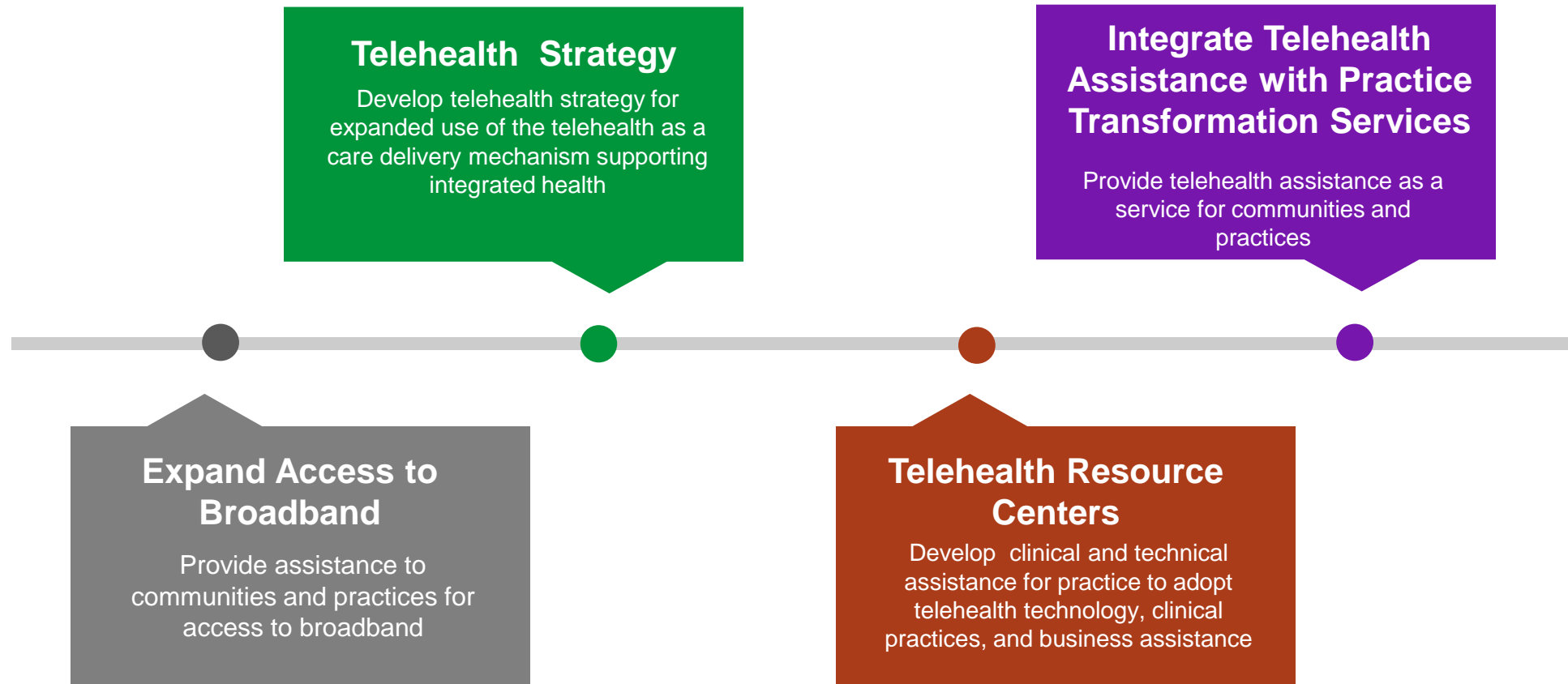
## CONSUMER ENGAGEMENT

- Create sustainability and cost reduction plans for Colorado communities.
- Determine how primary and behavioral health integration can help the consumer experience.
- Provide recommendations and feedback to other workgroups.

# HIT & DATA

- Clinical IT support for practices
  - HIT assessments: practice, community & state level
  - Support in HIT adoption & integrating HIT tools into workflow
- A governance structure with data policies to support data driven planning & implementation via:
  - Centralized data repository
  - Collecting, merging & analyzing clinical & claims data
- Telehealth

# SIM HIT - TELEHEALTH EXPANSION



# QUALITY MEASURES

Hypertension	Obesity	Tobacco	Prevention
Asthma	Diabetes	Ischemic Vascular Disease (IVD)	Safety
Depression	Anxiety	Substance Use	
Postpartum Depression Screening	Developmental Screening		

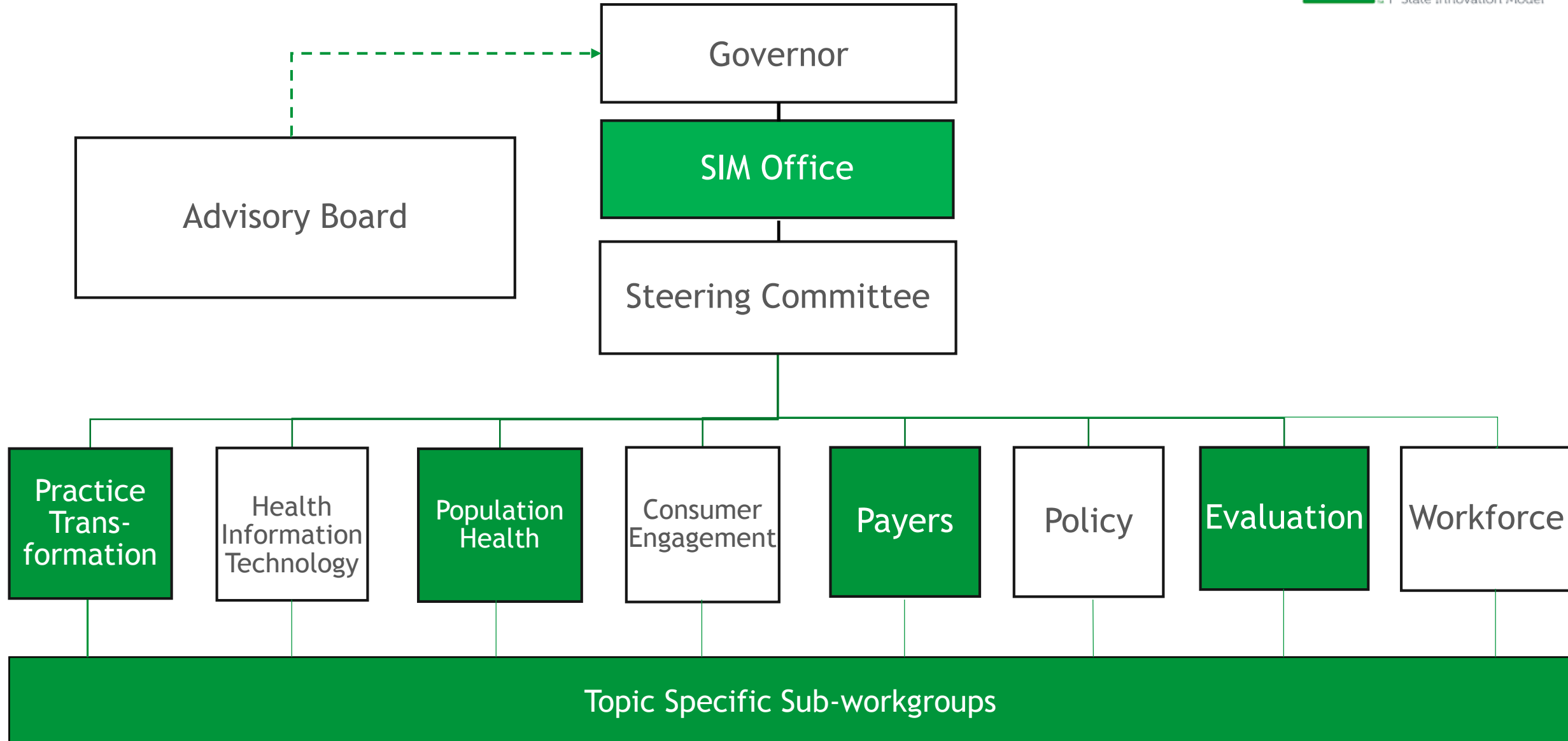
# WORKFORCE DEVELOPMENT

- Training and credentialing for community health workers
- Reimbursement and payment policies for community health workers
- Methodology for assessing and measuring integrated care capacity
- Training support professionals need for integrated care settings and the community
- Plan for policy and regulatory levers to assist integrated care workforce capacity
- Plan to support impact of payment reform on integrated care workforce

# POLICY AND EVALUATION

- Identify and recommend policy, regulatory and legislative changes to drive progress toward SIM goals
- Work with evaluators to assess the sustainability of the interventions
- Support ongoing program improvements

# SIM ORGANIZATION CHART





# QUESTIONS?



# CONTACT INFORMATION

Vatsala Pathy

SIM Director

[vatsala.pathy@state.co.us](mailto:vatsala.pathy@state.co.us)

720.471.3162 - cell

Lynnette Hampton

SIM Operations Manager

[lynnette.hampton@state.co.us](mailto:lynnette.hampton@state.co.us)

720.724.6214 - cell



# SIM

State Innovation Model

# THANK YOU!



**COLORADO**  
Office of the Governor  
Gov. John Hickenlooper

The Project described was supported by Funding Opportunity Number CMS-1G1-14-001 from the US Department of Health and Human Services, Centers for Medicare and Medicaid Services.